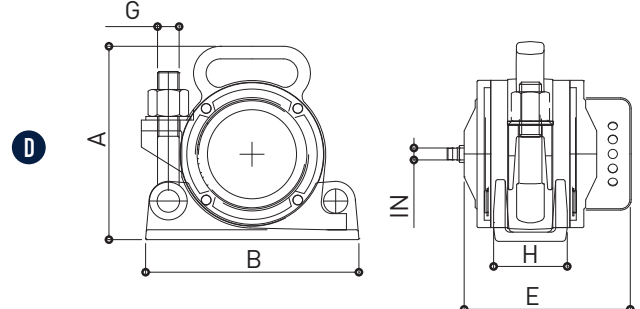
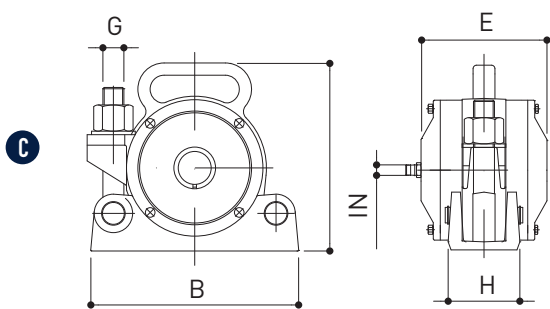
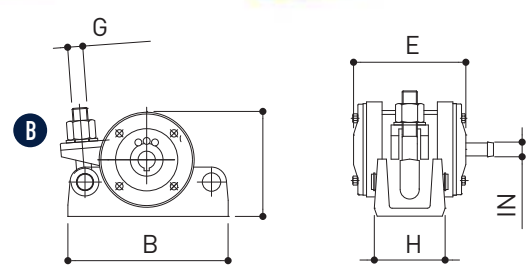
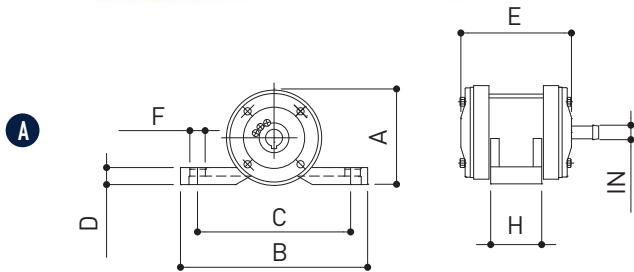




Pneumatic vibrators



MODEL	WORKING PRESSURE bar	VIBRATION vpm	CENTR. FORCE kg	AIR CONSUMP. l/min	NOISE LEVEL dB (A)	OVERALL DIMENSIONS										
						DRAWING	A	B	C	D	E	F	G	H	IN	WEIGHT
							mm	mm	mm	mm	mm	mm	mm	mm	mm	mm
HFP 600P	6	17,000	720	1,000	100	A	111	220	180	20	164	20	-	60	15	6.3
HFP 1000P		16,500	1,122	1,100												7.2
HFP 1400P		16,000	1,453	1,200												7.3
HFP 600C	6	17,000	720	1,000	100	B	120	180	-	-	164	-	18	94	15	6.3
HFP 1000C		16,500	1,122	1,100												7.2
HFP 1400C		16,000	1,453	1,200												7.3
HFP 2700C		16,000	2,753	1,600	103	C	224	238	-	-	160	-	24	84	15	14
HFP 4000C		15,200	4,079	1,800												14.5
HFP 6000C		14,500	6,118	1,800												16.3
HFP 4001C*	6	10,200	4,079	1,800	90	D	215	240	-	-	180	-	24	84	15	18

PNEUMATIC VIBRATORS FOR CONCRETE CONSOLIDATION

APPLICATION Concrete formworks in situ
Concrete moulds in precast industry

FEATURES

WORKING PRESSURE 6 bar

AIR SUPPLY QUALITY Class 5.4.4

WORKING TEMPERATURE -10°C +60°C

MAX NOISE LEVEL 103 dB(A)
Silent version HFC 4001C: 90 dB(A) at 1 meter distance

TECHNOLOGY Eccentric rotor

MATERIALS Steel and cast iron

CERTIFICATIONS Conformity verified according to the standard document UNI EN ISO 12100

ACCESSORIES Fastening systems:
CLW (Clamp for Wooden formworks);
CLS (Clamp for Steel formworks);
CRS (Cradle for Steel concrete moulds)

